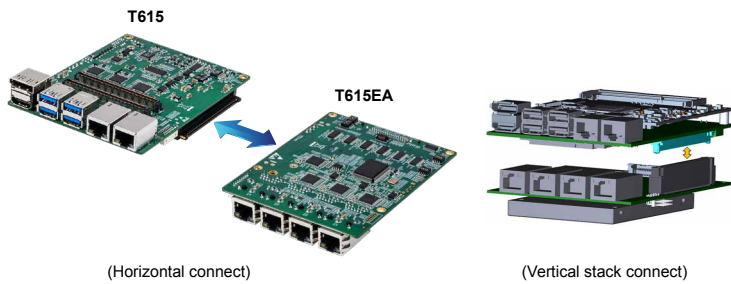
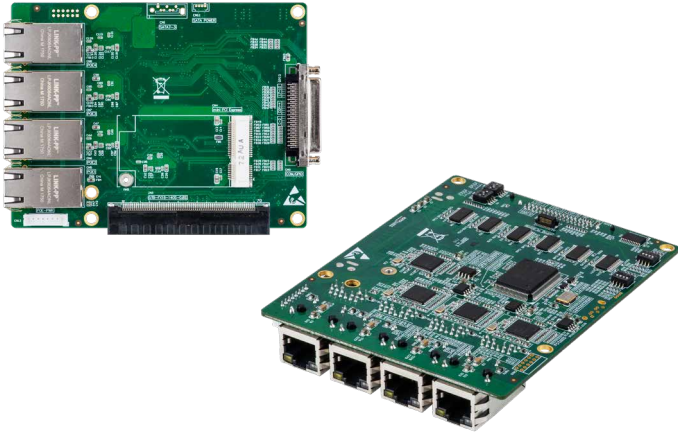


# T615EA

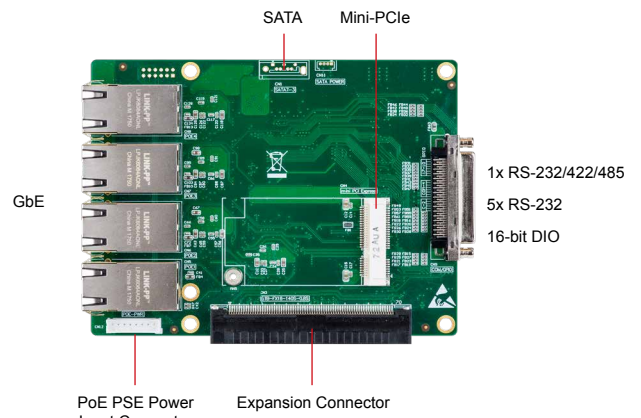
## Qseven Expansion Board



## Features

- Compact size: 125 x 95 mm
- 4x GbE support PoE PSE power-input
- 1x Mini-PCIe Socket
- 1x SATA (22pin)
- 6x UART (1x RS-232/422/485 switchable, 5x RS-232)
- 16-bit programmable GPIO

## I/O Interfaces

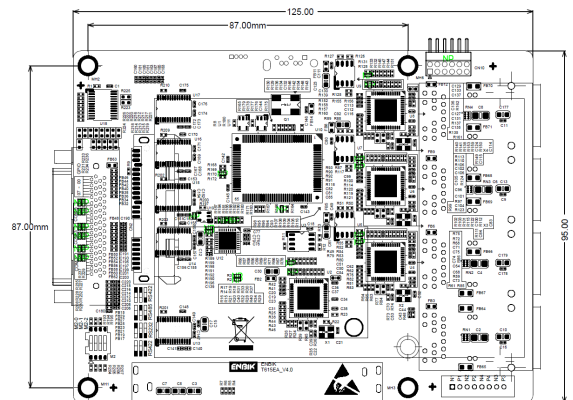


## Specifications

<b>Storage</b>	
<b>SATA</b>	1x SATA* (22-pin) (*Depends on CPU module)
<b>I/O Interface</b>	
<b>Ethernet</b>	4x GbE with PoE PSE power-input
<b>UART (Serial Port)</b>	1x RS-232/422/485, 5x RS-232
<b>Others</b>	
<b>Smart Battery Management</b>	ACPI 5.0 compliant
<b>Expansion</b>	
<b>Mini-PCIe</b>	1x Full-length Mini-PCIe socket* (*Depends on CPU module)
<b>Operating System</b>	
<b>Windows/Linux</b>	Depends on CPU module
<b>Mechanical</b>	
<b>Weight</b>	
<b>Dimensions</b>	125 x 95 mm
<b>Environment</b>	
<b>Operation Temperature</b>	-20°C ~ 70°C
<b>Storage Temperature</b>	-45°C ~ 85°C
<b>Operation Humidity</b>	10% to 90%, non-condensing
<b>Storage Humidity</b>	5% to 95%, non-condensing
<b>Certification</b>	CE/FCC Class A

## Dimensions

Units: mm



## I/O Comparison Chart

Model Name	GbE (RJ45)	DIO	RS-232/422/485	RS-232	Mini-PCIe	SATA
T615EA	4	16-bit programmable GPIO	1	5	1	22-pin SATA connector
T615EAV						

## Ordering Information

Model Name		Article Number (A/N)
T615	T615 Expansion Board (Horizontal Connector), 4x RJ45 GbE, 1x RS-232/422/485, 5x RS-232, 16-bit programmable GPIO	7422-615101
T615V	T615V Expansion Board (Vertical stack Connector), (4x RJ45 GbE, 1x RS-232/422/485, 5x RS-232, 16-bit programmable GPIO	7422-615201